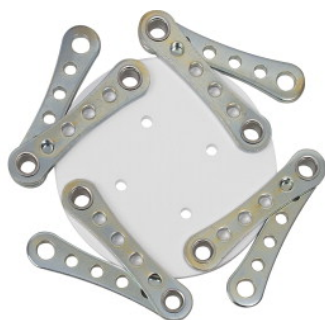



## Mounting spider for ceiling bracket

---



### Part-No. 761407

Mounting spider for the ceiling brackets (Part No. 761404.10 and 761405.10) for alternative attachment of the reflector sets (Part No. 761401.10 and 761402.10) on the ceiling bracket.

 The individual reflectors and reflector sets can also be used with the Fireray products. However, please observe the additional planning information in the relevant functional descriptions.

### Features:

- Motorized detector head
- User-friendly commissioning via automatic self-adjustment
- Disturbance-protected operation via automatic electromechanical tracking of the detector head during building movements
- Optimal access via remote operating unit at eye level
- Clear representation of all states via central indicator display on the operating unit
- High level of IP protection for usage under difficult environmental conditions
- Activation and reset via esserbus Transponder 808613.10 during loop operation
- Ranges from 5 to 100 m
- Large assortment of accessories
-